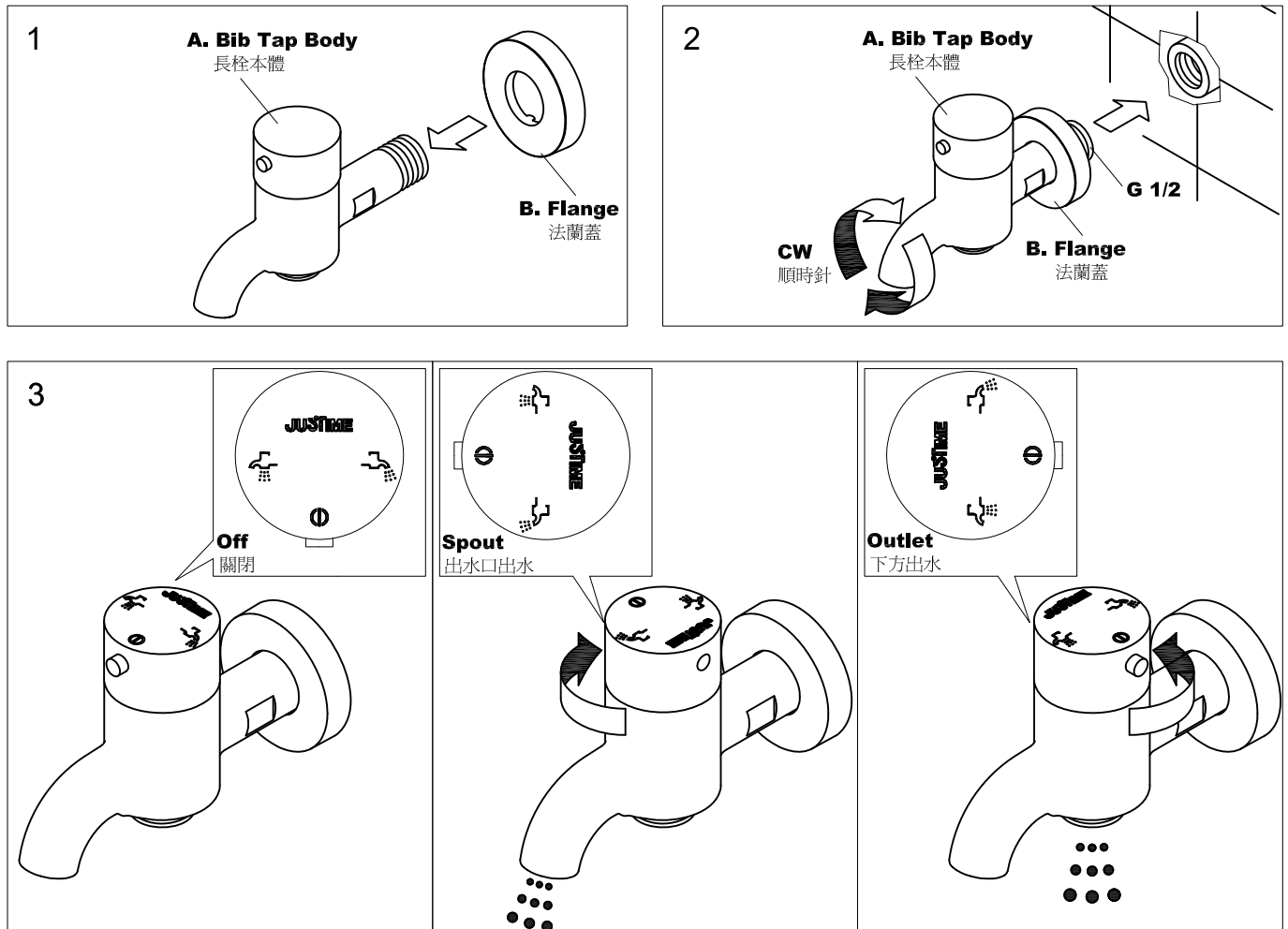


# INSTALLATION INSTRUCTIONS

## Two-way Bib Tap

### 兩用壁式長栓安裝說明



#### CAUTION : Risk Of Product Damage.

注意：為增加產品使用壽命，請依說明清潔供水管路。

When finished installation, turn the valve on and run for 1 minute before using.

完成安裝後，需在使用前先把供水開關全開排水持續一分鐘。

- Slide the **Flange** over the **Bib Tap** G 1/2 thread end, then apply pipe compound or thread sealant tape to the G 1/2 end, and screw **Bib Tap** with **Flange** into wall water-outlet. (Fig.1 & 2)

先將法蘭蓋套入長栓本體G1/2鎖牙處，將長栓本體G 1/2牙塗上管牙膠或包覆止洩帶，再連同法蘭蓋一起鎖入牆壁出水口。(如圖.1 & 2)

- The external thread beneath **Bib Tap Body** is G 1/2 which could be connected with various outlets, like hand shower or sprayer. The water flow could be diverted to Spout or Outlet by swiveling the handle as Fig.3 shown.

本體下出水口為G 1/2牙，可依需求鎖入各種出水裝置，如花灑或噴槍。操作方式如(圖.3)，旋轉把手可切換兩種出水位置及關閉出水。

## FIXING CONTENTS

### 組配件內容

