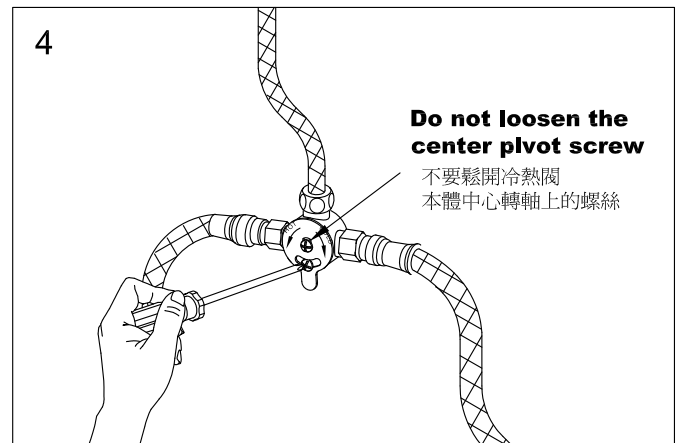
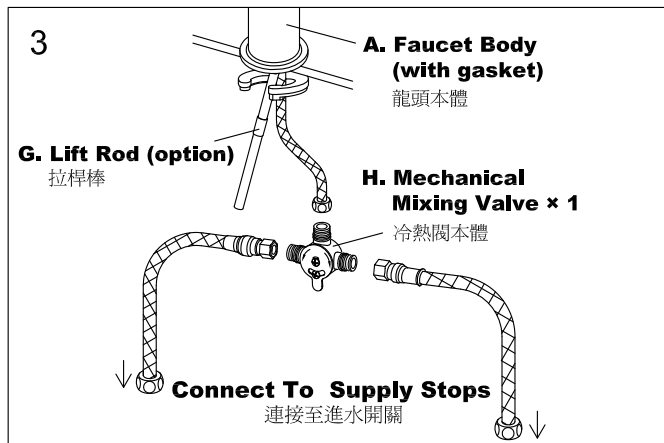
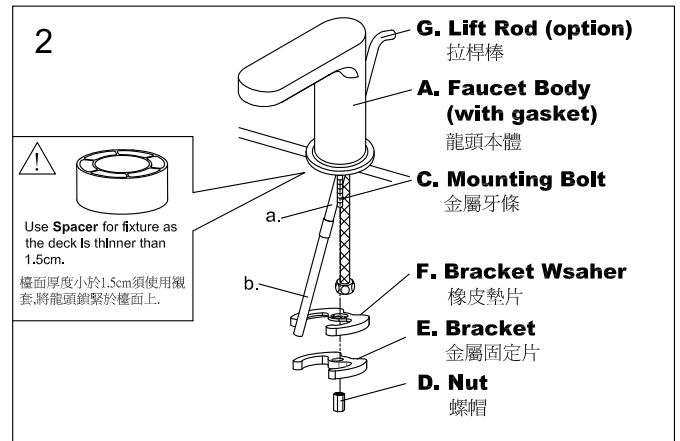
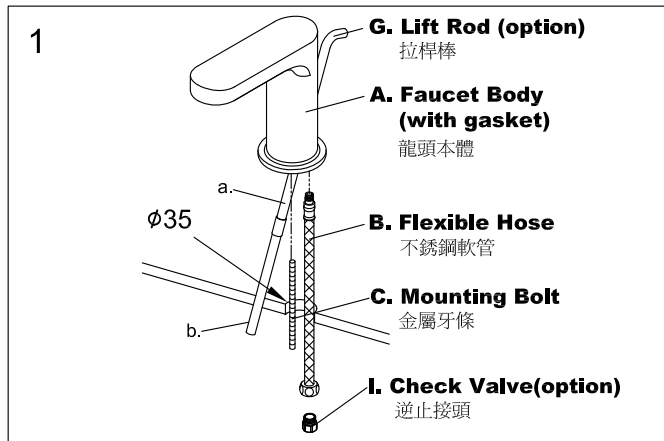


# INSTALLATION INSTRUCTIONS

## TIP-TOUCH LAVATORY FAUCET W/MIXING VALVE

### 按壓式檯面龍頭安裝說明(冷熱混合)



1. Screw **Flexible Hoses** and **Mounting Bolt** into **Faucet Body (with gasket)**, insert **Flexible Hoses** and **Mounting Bolt** through basin hole in fixture, meanwhile, assemble **Lift Rod (option)** with **Faucet Body**.  
將冷熱進水不銹鋼條軟管和金屬牙條鎖緊固定於龍頭本體, 再將冷熱進水不銹鋼條軟管和金屬牙條穿過洗臉盆(檯)洞口後, 準備安裝, 同時, 把拉桿棒組(選擇性零件)裝在龍頭本體上。
2. Place **Bracket (with Bracket Washer)** and **Nut** onto **Mounting Bolt**, position faucet on fixture, then tighten **Nut** securely.  
從金屬牙條下方依序套入橡皮墊片, 金屬固定片, 和螺帽, 確認龍頭方向位置後, 鎖緊螺帽固定龍頭即可。
3. Fix **Tip-Touch Faucet** first, then install **Mechanical Mixing Valve** on the hot and cold water supplies to the **Tip-Touch Faucet**.  
然後將按壓式檯面龍頭安裝固定, 再將冷熱進水不銹鋼條軟管和冷熱閥本體組合, 並且鎖緊固定於按壓式龍頭本體下方。
4. Loosen the **Mechanical Mixing Valve** dial plate lock-screw, adjust the proper water temperature as the direction of the arrows, then tighten the lock-screw to lock adjustment. (Caution: Do not attempt to loosen the center pivot screw.)  
鬆開冷熱閥本體上調節溫度的螺絲, 適當調整出水溫度, 然後鎖緊螺絲, 以完成溫度調節的功能。(警告: 不要試圖鬆開冷熱閥本體中心轉軸上的螺絲。)

## FIXING CONTENTS

### 組配件內容

