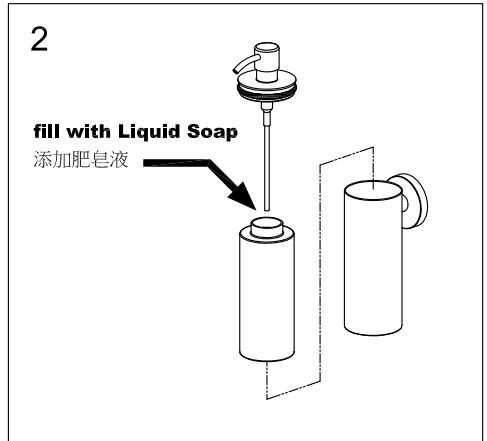
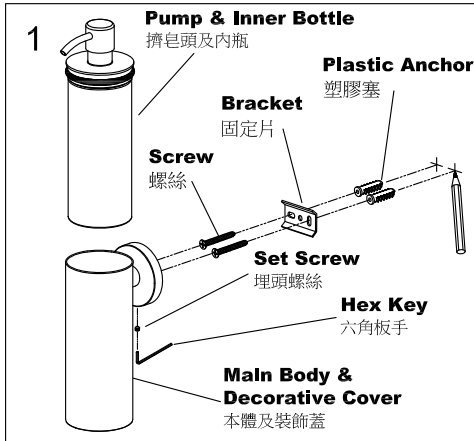


# INSTALLATION INSTRUCTIONS

## WALL-MOUNTED SOAP DISPENSER

### 壁式擠皂罐組安裝說明



1. Select proper position for product and mark center of mounting hole on wall.  
請先選取預定安裝的位置，並在牆壁上畫上預定鑽孔記號。
2. Using a 6mm drill-bit, drill the holes in marked position to a depth of 4cm. Insert the **Plastic Anchors** into the holes on the wall, put the **Screws** through the **Bracket**, then screw into the **Plastic Anchors**.  
當安裝在水泥牆，使用6mm鑽頭，鑽孔深度4公分，填入塑膠塞並使之齊平於牆面，將固定片以螺絲鎖緊在牆上。
3. Use the **Hex Key** to loosen the **Set Screw** in the **Decorative Cover**. Locate the **Main Body & Decorative Cover** on the **Bracket** and secure with **Set Screw**.  
先用隨附六角扳手鬆開裝飾蓋下方的埋頭螺絲，將瓶身及裝飾蓋掛上固定片後，將埋頭螺絲鎖緊。
4. Put the **Pump & Inner bottle** into **Main Body**.  
擠皂頭及內瓶放入本體，完成安裝程序。
5. Fill with Liquid Soap as Fig. 2 shown.  
依圖示添加肥皂液

## FIXING CONTENTS

### 組配件內容

